



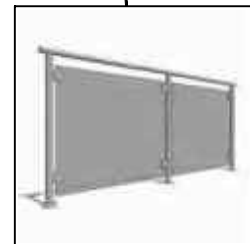
**Mixed Use Building**



**Apartment Building**



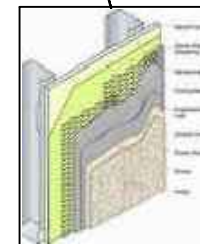
**Glass & Frames:**  
Clear aluminum framing & clear thermal pane glass.



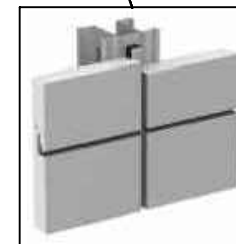
**Guard Rails**  
Clear aluminum framing & clear glass panels.



**Masonry**  
Polished concrete masonry.



**Hard Coat Stucco**

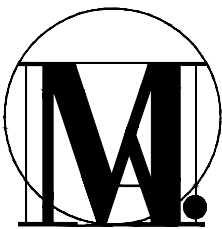


**Composite Panels**

**Note:**  
All material manufacturers and colors to be determined.

**BELLINO at CORNHUSKER**

PAPILLION, NEBRASKA



**Meyer & Associates, Architects**  
11602 W. Center Rd., Suite 350  
Omaha, NE 68144  
402.391.1823 ☎

[www.meyerarchitecture.com](http://www.meyerarchitecture.com)