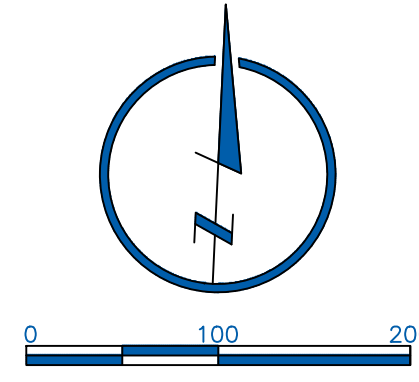
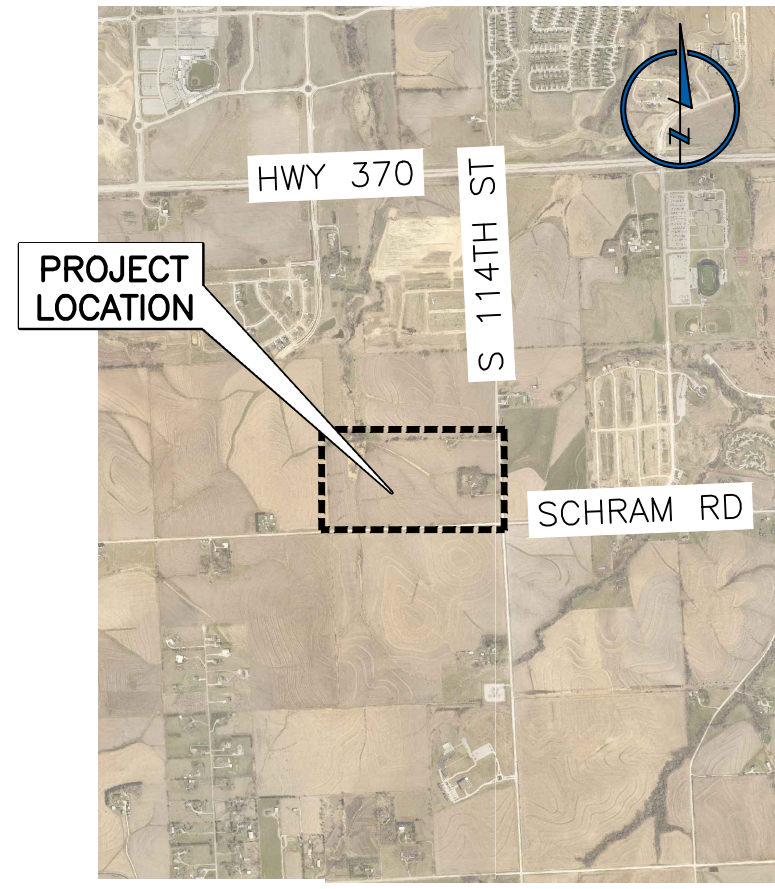


# ASHBURY CREEK 2

LOTS 1 THROUGH 112, INCLUSIVE, AND OUTLOTS A AND B, INCLUSIVE, BEING A REPLATTING OF LOT 1, SEIBOLD ACRES, A SUBDIVISION, AS SURVEYED, PLATTED AND RECORDED IN SARPY COUNTY, NEBRASKA, TOGETHER WITH TAX LOT 4 AND PART OF TAX LOT 3 IN THE SOUTH HALF OF THE SOUTHWEST QUARTER OF SECTION 32, TOWNSHIP 14 NORTH, RANGE 12 EAST OF THE 6TH P.M., SARPY COUNTY, NEBRASKA



LOCATED IN:  
SW 1/4 SW 1/4 SEC. 32, T14N, R12E  
SE 1/4 SW 1/4 SEC. 32, T14N, R12E



**LAMP RYNERSON**  
14710 W. DODGE RD., STE. 100  
OMAHA, NE 68154  
402.496.2498  
LampRyerson.com

PRELIMINARY

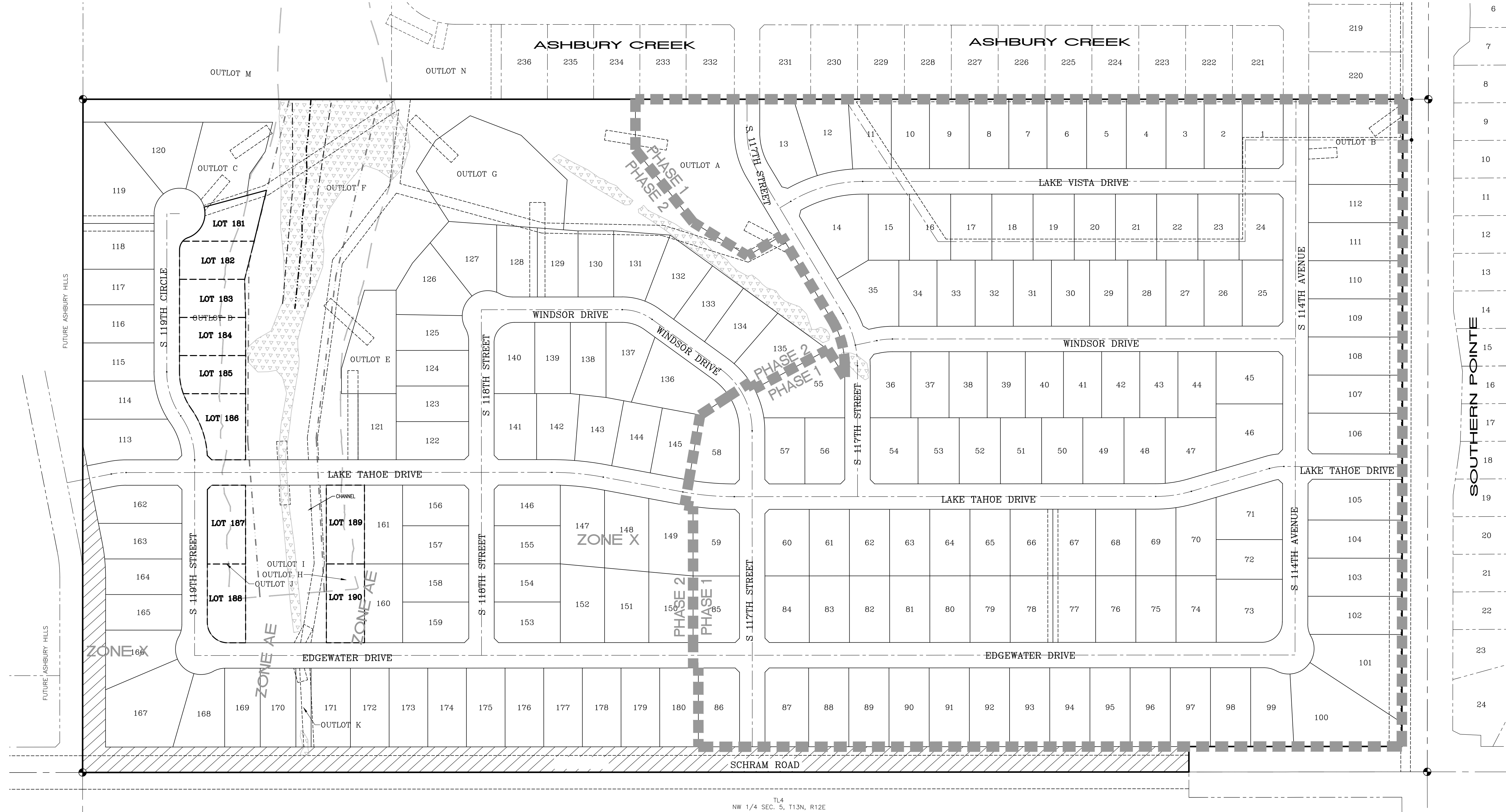
NOT RELEASED FOR CONSTRUCTION  
AARON J. GROTE

**\*NOTE:**

OUTLOTS D, H AND J CURRENTLY IN THE EXISTING FLOODWAY ARE PROPOSED TO BE REMOVED FROM THE SFHA AND ONCE REMOVED WILL BE REPLATTED AS BUILDABLE LOTS 181 THROUGH 190, INCLUSIVE

**LEGEND**

- CORNER FOUND
- SECTION LINE
- SECTION CORNER
- BOUNDARY LINE
- LOT LINE (LOTS 1-180)
- FUTURE LOT LINE (LOTS 181-190)\*
- EXISTING LOT LINE
- EASEMENT LINE
- ▨ STREET DEDICATION
- ▨ FUTURE FLOOD PLAIN
- ▨ FLOODWAY
- ▨ BUILDING SETBACK LINE
- ▨ POTENTIAL WETLANDS
- ▨ CHANNEL
- ▨ 3:1 PLUS 20 DRAINAGEWAY
- ▨ PHASE LINE



SOUTHERN POINTE

T4  
NW 1/4 SEC. 5, T13N, R12E

FINAL PLAT  
PHASING EXHIBIT

ASHBURY CREEK 2  
SARPY COUNTY, NEBRASKA



Know what's below.  
Call before you dig.

DESIGNER / DRAFTER PAUL GARGARELLA
DATE 3/11/2019
PROJECT NUMBER 9117980.01
BOOK AND PAGE

**EXHIBIT H**

L:\Signings\0117089\_Ashbury\_Creek\_2\Drawings\ASBURY\PLAT\_PDF\031119\ASBURY\_PLAT\_PDF\_031119.dwg, 3/11/2019 2:24:33 AM, ANDREW WATKINS, LAMP RYNERSON