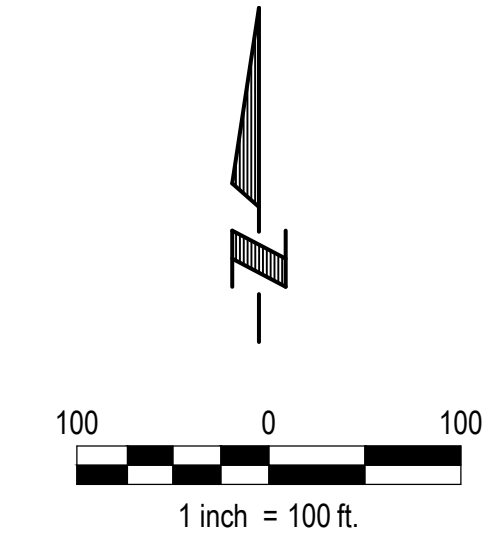


# GRANITE CREEK EAST

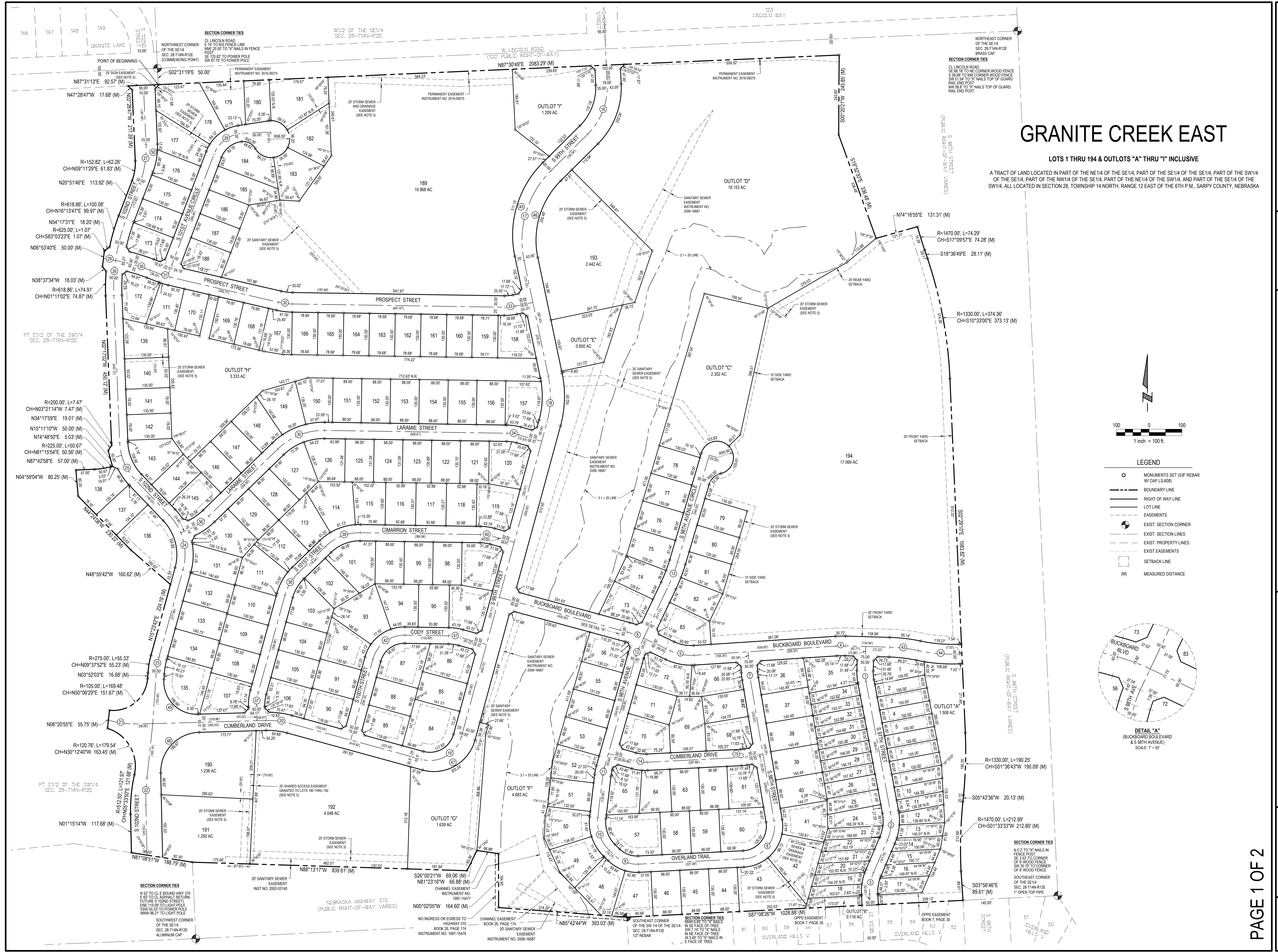
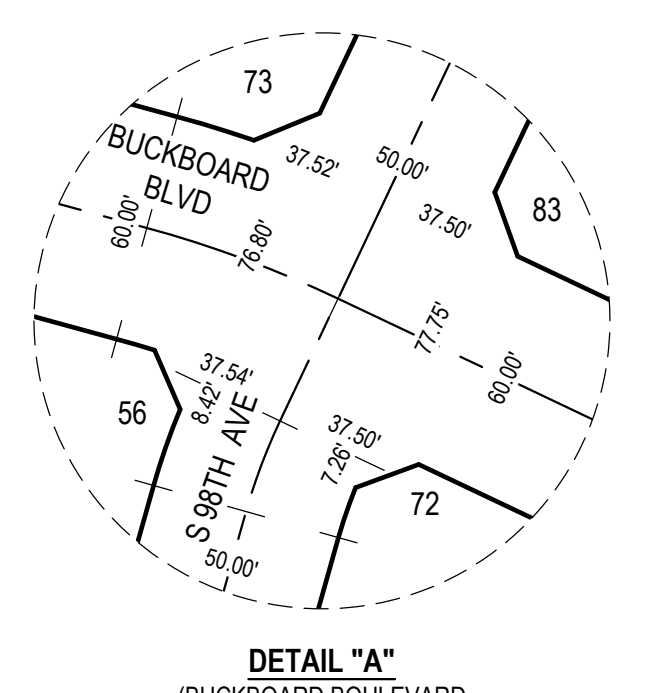
LOTS 1 THRU 194 & OUTLOTS "A" THRU "I" INCLUSIVE

A TRACT OF LAND LOCATED IN PART OF THE NE1/4 OF THE SE1/4, PART OF THE SE1/4 OF THE SE1/4, PART OF THE SW1/4 OF THE SE1/4, PART OF THE NW1/4 OF THE SE1/4, PART OF THE NE1/4 OF THE SW1/4, AND PART OF THE SE1/4 OF THE SW1/4, ALL LOCATED IN SECTION 28, TOWNSHIP 14 NORTH, RANGE 12 EAST OF THE 6TH P.M., SARY COUNTY, NEBRASKA



### LEGEND

- MONUMENTS SET (5/8" REBAR W/ CAP LS-608)
- BOUNDARY LINE
- RIGHT OF WAY LINE
- LOT LINE
- EASEMENTS
- EXIST. SECTION CORNER
- EXIST. SECTION LINES
- EXIST. PROPERTY LINES
- EXIST. EASEMENTS
- SETBACK LINE
- (M) MEASURED DISTANCE



**E & A CONSULTING GROUP, INC.**  
Engineering • Planning • Environmental & Field Services

**E & A CONSULTING GROUP, INC.**  
Engineering Answers

GRANITE CREEK EAST  
LOTS 1 THRU 194 & OUTLOTS "A" THRU "I" INCLUSIVE  
PAPILLON, NEBRASKA

**EXHIBIT "B"**  
**FINAL PLAT**

**PAGE 1 OF 2**

Revisions	Description	Date
1	DESIGN	10-03-2022
2	REVISION	10-03-2022

Proj. No.:	P2021141001
Date:	10-03-2022
Designed By:	JRS
Drawn By:	JRS
Scale:	1" = 100'
Sheet:	1 of 2

11/20/2023 9:50 PM K:\Projects\2021141001\Planning & Planning\Plan\Plan\Plat\Final\Final.plt

